

Serious photography meets passionate creativity.

**OLYMPUS**

**E-30**



**Capture It All.®**

Olympus ZUIKO DIGITAL™ 9-18mm, 1/1.6 sec. f4.0



## Capture your imagination.

You are a blend of talents. You know your way around a camera and understand how to use technology to faithfully (and beautifully) capture reality. You possess an imagination buzzing with ideas to stamp your creative vision on your images.

The E-30 lets you make the most of your talents so you can take your photos to a more beautiful, artful level. Our Multiple Exposure feature lets you overlay up to four images, providing endless opportunity for creative expression. Six Art Filters give your photos a stylized look. Choose the saturated color of Pop Art, the black and white grittiness of Grainy Film, as well as four others. The E-30 is more than a camera, it's a visual playground for your imagination.

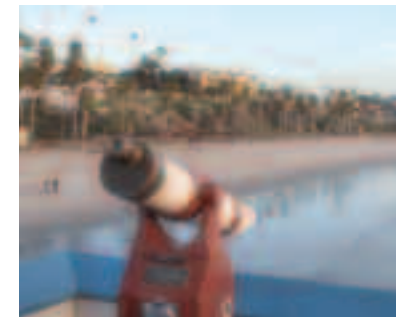
Of course, you want advanced technology that complements your skills and delivers nothing less than spectacular images. The E-30 features a blazingly fast 11-point AF system — never miss a shot again. In-body Image Stabilization means every Olympus ZUIKO DIGITAL™ lens gives you crisp, clear photos. An industry-dominating Dust Reduction System ensures spot-free photos. Thanks to a 12.3 megapixel Live MOS Sensor and TruePic™ III+ image processor, your shots will have exquisite detail, rich gradations and natural color.

The E-30's unique combination of technology and artistic features is ideal for anyone who wants to take their photography into new creative territory. It's the one camera that truly lets you capture your imagination.

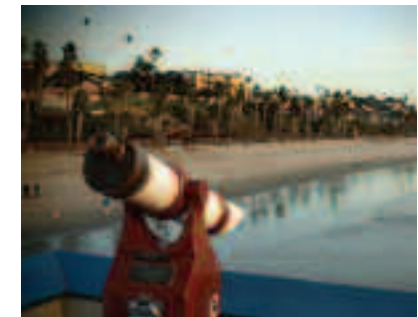


## Expand your creative possibilities.

The E-30's six in-camera Art Filters let you give your images a stylized look and unique feel. Anyone can enjoy hassle-free creative photography anywhere.



Soft Focus



Pin Hole



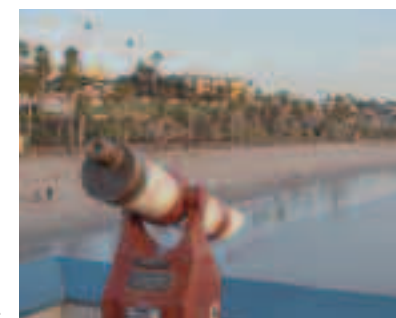
Normal



Pale & Light Color



Grainy Film



Light Tone



Pop Art



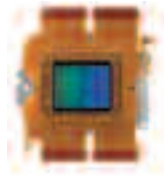
## IMAGE QUALITY

Sharp images can only come from brilliant technology.

The Olympus E-30 is fully equipped with advanced technologies to deliver images with uncompromising quality. You'll find a number of industry-leading features that work to ensure every shot is an amazing shot.

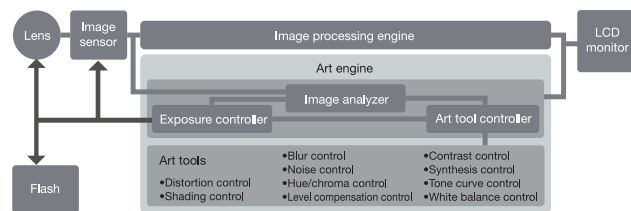
### New 12.3 MP Live MOS Sensor.

Our new 12.3 megapixel high-speed Live MOS Sensor delivers high-resolution images noted for intricate detail, rich gradations and natural colors. This innovative sensor improves reading time and, when used in combination with Four Thirds lenses, gives you unmatched sharpness across the entire photograph.



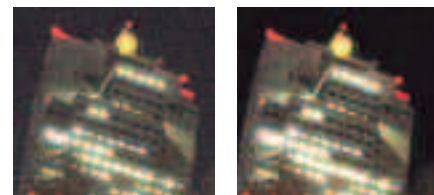
### A powerhouse of an image processor.

The TruePic™ III+ is a small yet mighty processing engine that helps the Live MOS Sensor to work so effectively. The E-30's Art Filter functions are housed here to let you explore the full range of your creativity. Shoot with long exposures or at high sensitivity with two noise-reducing modes.



### Noise-reduction functions.

Two noise-reducing functions are available when shooting with long exposures at high ISO sensitivity.



Long-exposure noise reduction OFF

Long-exposure noise reduction ON

### Image Stabilization that's built in, not added on.



The E-30's Image Stabilization system resides in the camera body so you can use any one of our 20 ZUIKO DIGITAL™ lenses or any Four Thirds lens to capture crisp, blur-free images. The system features an incredibly sensitive gyro sensor and supersonic motors to compensate for camera shake for up to five shutter speed steps\*. Two modes — IS-2 horizontal and IS-3 vertical — allow for blur-free panning.

\*Correction effect varies depending on the lens type and shooting conditions.



### Take dust out of the picture.

Once dust gets on the image sensor, it shows up in the same spot on every picture. Our revolutionary, proven Dust Reduction System features a Supersonic Wave Filter (SSWF) located in front of the image sensor that vibrates an astounding 30,000 times per second. Dust is automatically shaken off every time the camera is turned on so you'll always get spot-free photos.



Supersonic Wave Drive testing



SSWF unit

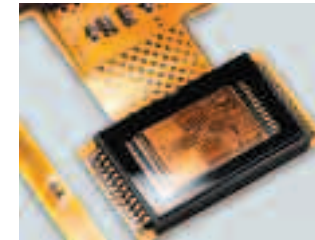
## SPEED

Even the world's fastest-moving objects can't outrun our autofocus system.

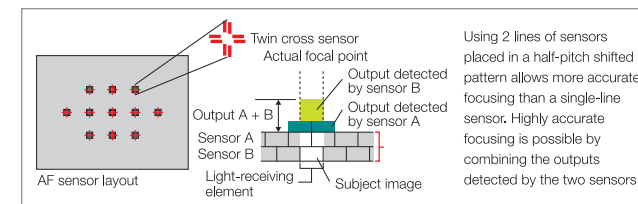
The E-30 has the same record-setting, blazingly fast autofocus speeds as our professional E-3 camera. Now you have the technology to clearly capture anything — even the speediest subjects on the planet.

### Innovative 11-point Full-Twin Cross AF Sensor ensures accuracy.

Each cross sensor element at each of the 11 distance-measuring points of the AF system has two horizontal and two vertical lines. Accurate distance measurement is possible throughout the luminance range thanks to a dedicated AF engine. Achieve high AF accuracy with any Four Thirds lens.

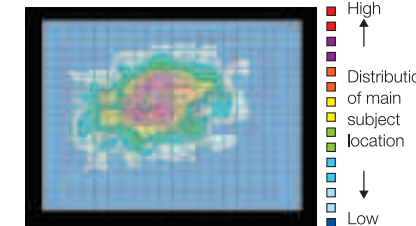


AF sensor section



### Optimum location of AF points.

The location of the AF distance-measuring points was determined using extensive research based on statistical analysis of the locations of the main subjects in a huge amount of photo data. As it covers a wide area instead of just the center of the image, this sensor layout makes the AF system more effective and more practical.



### Set your AF point.

Choose from three AF target patterns. All patterns use all 11 AF points. Dynamic Single uses the selected point plus three or four around it. Single uses one point.



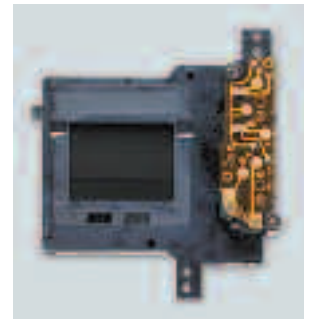
All points

Dynamic Single point

Single point

### Exceedingly fast shutter speeds.

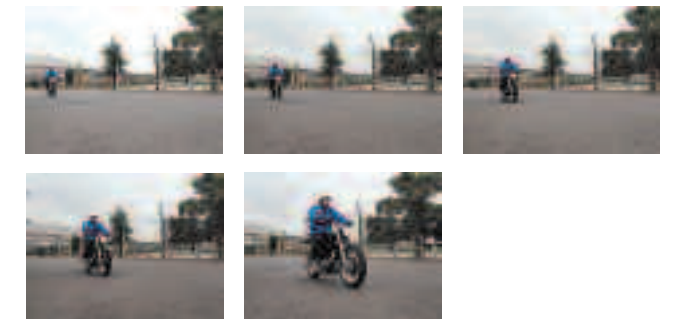
With a shutter speed up to 1/8000 sec. and an x-sync speed of 1/250 sec., you can shoot with an open aperture in bright sunlight. Super FP-flash shooting with full speed sync up to 1/8000 sec. can be achieved using the FL-50R or FL-36R external flash. These amazingly fast shutter speeds let you take full advantage of the high optical performance of our ZUIKO DIGITAL lenses.



Shutter unit

### Capture it all with 5 fps sequential shooting.

The E-30's high-speed 5 fps sequential shooting is made possible by the fast readout speed of the Live MOS Sensor, the quicker speed of the TruePic™ III+ image processor and a more efficient high-precision mirror mechanism.



### High-speed AF with Supersonic Wave Drive (SWD).

The SWD's compact, ultrasonic motor was developed by Olympus to make the AF drive at unparalleled high speed. To improve AF accuracy, an ultra-compact encoder is incorporated to detect positions and control focusing with astonishing accuracy. From start to acceleration, control and stoppage, it moves the lens to the focusing position quickly and accurately, providing high-speed autofocusing comparable to the super-fast AF of the E-3 when the Olympus ZUIKO DIGITAL ED 12-60mm f2.8-4.0 SWD lens is mounted on the E-30.



Supersonic element of SWD motor

# FUNCTIONALITY

## Technological tools to take your images to impressive new heights.

The E-30 comes fully equipped with the advanced technology to ensure the only images you take are brilliant ones. There's an impressive array of features to help you take creative control, capture spectacular shots and bring your imagination to life.

### A big, bright optical viewfinder.

With a 98% field-of-view and a 1.02\* magnification, you have an expansive, clear view of your subject. All the lenses are surface coated to brighten the image in the viewfinder and provide a natural look.

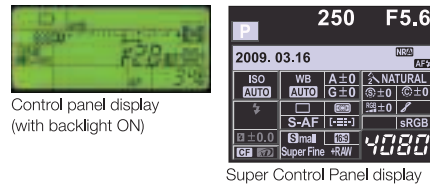
\*At -1m† 50mm lens, infinity



Shooting information displayed at the bottom of viewfinder

### Easy-to-read dual control panels.

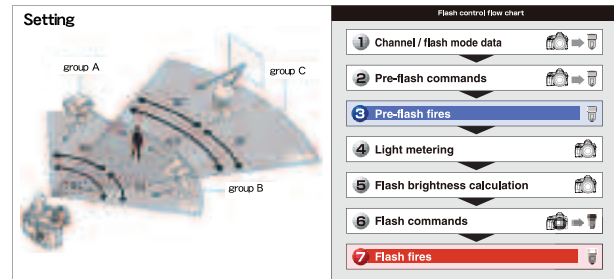
Always know what's going on with your E-30. Two control panels — one at the top and one on the back — let you effortlessly check settings and conditions. The Super Control Panel on the LCD allows you to directly select and set functions.



### Wireless flash photography for more lighting options.

The E-30's in-camera commander function lets you wirelessly control up to three groups in four channels of flashes to execute a wide range of creative lighting set-ups. TTL flash lets you control the intensity of each flash group individually.\*

\*GN-18 (ISO 200)



### A Digital Leveler right on the LCD.

Thanks to a three-axis acceleration sensor, you can check the camera's horizontal and vertical angles on the LCD or viewfinder.



This lets you easily adjust the camera so that it's level, even when it's normally hard to check the level, such as shooting at night.

### Always get the perfect exposure.

The E-30 has five light metering modes\*:

- Our unique Digital ESP (Electro-Selective Pattern) metering divides the image frame area into 49 zones. It computes the optimum exposure value under complex lighting conditions.
- Center-weighted average metering measures the full frame area while emphasizing the center.
- Spot metering limits metering to a small center area.
- A spot highlight option ensures accurate reproduction of white as white.
- A spot shadow option ensures accurate reproduction of black as black.

\*Individual metering modes can be customized.

### Twenty-eight shooting modes for versatility and creativity.

Creative control is completely in your hands. A variety of shooting modes, including 11 easy-to-navigate Scene Select modes, are available.



- **Exposure modes:** Program, Program Shift, Aperture priority, Shutter priority, Manual
- **Scene Program modes:** Auto, Portrait, Landscape, Macro, Sport, Night Scene & Portrait
- **Scene Select modes:** Children, High Key, Low Key, Image Stabilization, Nature macro, Candle, Sunset, Document, Panorama, Fireworks, Beach & Snow
- **Art Filter effects:** Pop Art, Soft Focus, Pale & Light Color, Light Tone, Grainy Film, Pin Hole



### Bracketing makes difficult shots easier.

The E-30 comes with four bracketing options: ISO, WB, exposure and flash. Bracketing helps you find the best setting in challenging lighting conditions like a sunset or shooting against light.

### Shadow Adjustment Technology for brighter, richly detailed images.

Photographers have a choice of four gradation settings: Auto, High Key, Normal and Low Key. The Auto setting uses Shadow Adjustment Technology (SAT) to balance over-exposed highlight areas with under-exposed shadow areas in conditions like backlight.

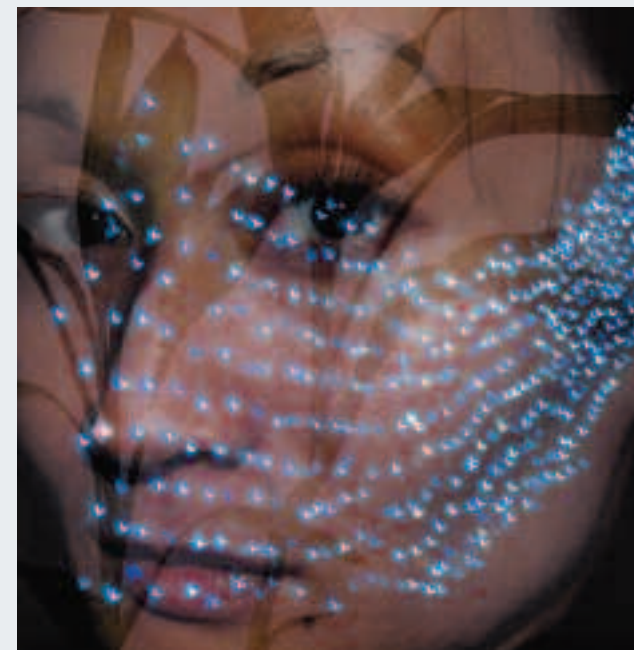


Gradation Auto on Gradation Auto off

## Multiple exposure for endless artistic possibilities.

If you can picture a scene in your imagination, we can help you create it. The E-30's multiple exposure function lets you create unique, striking photos by combining up to four images in one shot using the Live View LCD. Just shoot the next frame while overlaying your last shot as a semi-transparent image so you can see what the final photo will look like. With the Playback (RAW) + Multi-exposure mode, you can use RAW images\* taken at a different time and place as the base image and then overlay up to four exposures that can be saved as a single image.

\*RAW images taken with the E-30 only.



### Capture clear faces every time.

While shooting in Live View, the E-30 will detect up to eight faces and automatically adjust the focus and exposure for crisp shots. If the faces are silhouetted against backlight, the gradation auto (SAT) function will clearly capture both the faces and background. In picture playback, you can select and magnify a face for easy review.



Up to eight faces can be detected at a time

Face Detection & Shadow Adjustment on

Face Detection & Shadow Adjustment off

### Preview your shot.

Check the effects of exposure composition and white balance on the LCD before you shoot. The Perfect Shot Preview mode can display four pictures with different settings so you can set the White Balance and Exposure to achieve the look you want.



### Magnify the details on an image.

Any part of an image displayed on the LCD can be magnified 5, 7 or 10 times. Fine focusing is possible while maintaining the framing when using a tripod — a convenient feature for macro shooting. Precise focusing is possible with manual and autofocus. The enlarged image can be scrolled to check other parts of the shot.



### Extreme angle shots are now extremely easy.

The E-30 features a 270° swiveling, high-resolution Live View LCD that rotates up and down and from side to side. Shooting from both high and low angles is effortless. The monitor uses a 2.7" HyperCrystal™ II

LCD with a 230,000 pixel display. The wide 176° viewing angle lets you see the LCD in all four directions — even in bright sunlight.



### Never miss a shot with Autofocus Live View.

Shooting with Live View is now faster than ever. The E-30 uses a high-speed Imager AF for easy, amazingly accurate 11-point multi-area autofocusing with Live View — simply press the shutter button halfway.

### Framing-assist patterns and histogram display.

During Live View shooting, the LCD can display one of three framing-assist patterns, including the golden section, grid and scale, to facilitate composition and adjustment of the image horizontally. The LCD can also display a histogram for use in checking exposure condition.



Grid line

Golden section

Histogram

# ART FILTERS

Add style to your photography with six Art Filters.

Often the most interesting, the most arresting photographs have a distinct look. The E-30 has six in-camera Art Filters that can be applied to your images. Before shooting, you can preview the effect on your photo on the LCD. You can also set the combination of aperture and shutter speed to get the look you want. It's how photography becomes art.



Art Filter: Pop Art



Normal

## Pop Art

This effect enhances colors, making them stronger and more vivid and creating high-impact pictures with a pop art feeling.



Art Filter: Soft Focus

## Soft Focus

The soft tone creates an ethereal look for beautiful images with a fantasy-like feel.



Normal



Art Filter: Pale & Light Color

## Pale & Light Color

Uses muted color tonalities to surround your subject in a soft light as if evoking a memory or a dream.



Normal

### Light Tone

Subdues highlights and shadows to reflect the ambiance of a perfectly illuminated scene. Both the shade and highlight areas are rendered softly to create a sophisticated feel.



Normal



Art Filter: Light Tone

### Grainy Film

This effect recreates the rich, grainy look and tonality evoked by monochrome pictures to give images a dramatic feel.



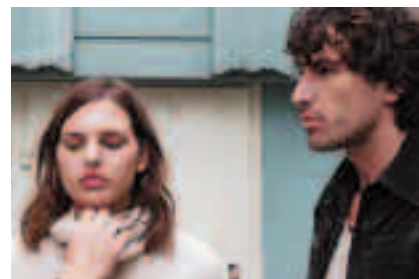
Normal



Art Filter: Grainy Film

### Pin Hole

The unique color tone reproduces the peripheral vignetting and unique color tone of photos taken with a pin hole camera.



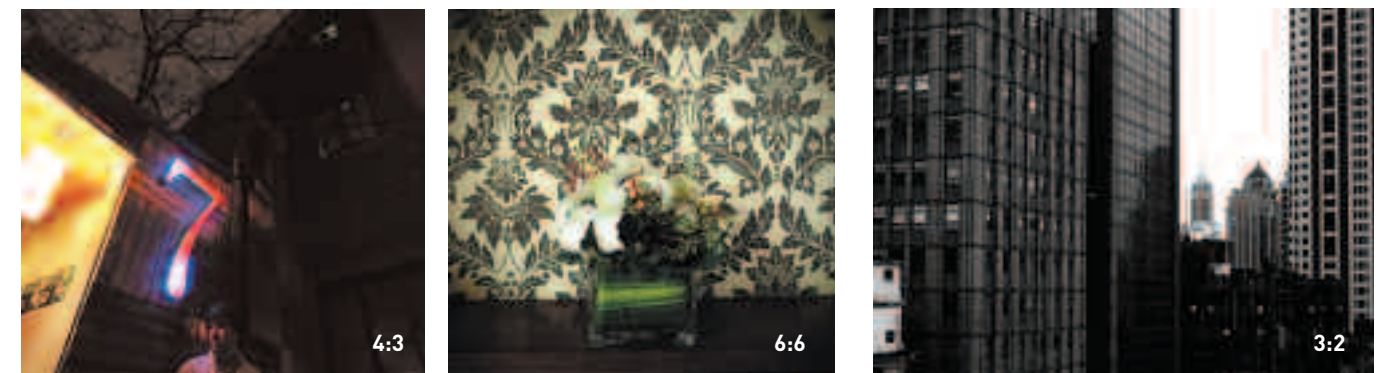
Normal



Art Filter: Pin Hole

## Creative ideas come in all sizes. Luckily, you can choose from nine aspect ratios.

Framing is a critical style element in photography. The E-30 lets you choose from nine aspect ratios including the standard 4:3, the cinematic 16:9, the medium-format camera size of 6:6 and others. The ability to select your aspect ratio and see it on the LCD before shooting lets you find just the right image size to fit your artistic vision.



- 4:3 — Standard
- 3:4 — Standard-vertical orientation
- 3:2 — 35mm camera
- 6:6 — Medium-format camera
- 7:6 — Medium-format camera
- 5:4 — Large-format camera / 8" x 10"
- 6:5 — 10" x 12"
- 7:5 — A4-size
- 16:9 — Cinematic



The Live View LCD displays the image in the selected aspect ratio and enables intuitive shooting.

# FOUR THIRDS SYSTEM

Your digital SLR deserves lenses specifically made for digital photography.



Olympus ZUIKO DIGITAL™ lenses are an integral part of the Olympus E-System and fulfill the potential of digital imaging. These Four Thirds standard compliant lenses are designed to transmit light in a near-straight path to all parts of the image sensor, even the peripheries, ensuring a clear, bright image — something impossible for legacy 35mm film lenses. Four Thirds lenses are lightweight and highly portable, giving you the same imaging power as other lenses that are twice the size.

## Unmatched imaging excellence with ZUIKO DIGITAL™ lenses.

Olympus ZUIKO DIGITAL lenses are known around the world for excellent resolution and unmatched image performance. They're produced at our Tatsuno plant, a high-tech facility nestled in the mountains of Japan. Lenses crafted at this plant are designated "TATSUNO QUALITY." The name indicates a stringent level of quality based on advanced aspherical lens element manufacturing, ultra-high-precision lens-assembling techniques and sophisticated lens-measuring technology. Only lenses that meet these exacting standards are sold as "Olympus ZUIKO DIGITAL."



1/125 sec. f22



**ZUIKO DIGITAL™ 14-54mm f2.8-3.5 II (28-108mm\*)**  
Closest focusing distance: 87.40" | Dimensions: 2.94" x 3.48"  
Weight: 15.52 oz. | Filter size: 67mm

High-performance standard zoom lens with high-speed imager AF compatibility enables seamless AF Live View shooting. It incorporates three aspherical lens elements to secure sharp, high-contrast imaging performance and close-focusing capability of 8.66" throughout the zoom range and a new circular aperture mechanism.



1/1.6 sec. f4.0



**ZUIKO DIGITAL™ ED 9-18mm f4.0-5.6 (18-36mm\*)**  
Closest focusing distance: 9.84" | Dimensions: 3.13" x 2.87"  
Weight: 9.7 oz. | Filter size: 72mm

This ultrawide-angle capable zoom lens is compatible with our high-speed imager AF. A compact DSA (Dual Super Aspherical) lens limits the overall length to only 28.74". The excellent portability of the Four Thirds system enables even ultrawide-angle night view shooting in combination with the camera's In-body Image Stabilization.



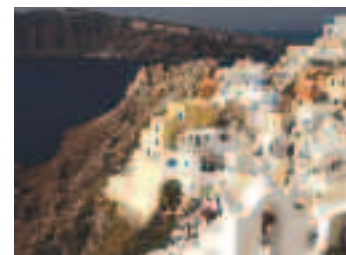
1/125 sec. f11



**ZUIKO DIGITAL™ ED 14-35mm f2.0 SWD (28-70mm\*)**

Closest focusing distance: 13.78" | Dimensions: 3.39" x 4.84"  
Weight: 32.3 oz. | Filter size: 77mm

The world's first standard zoom lens has a large f2.0 constant aperture throughout its zoom range. Chromatic aberration is minimized with one aspherical ED (Extra-low Dispersion) lens and two ED lenses. It features a fast SWD-powered AF drive and stress-free focusing thanks to a mechanically linked manual mechanism.



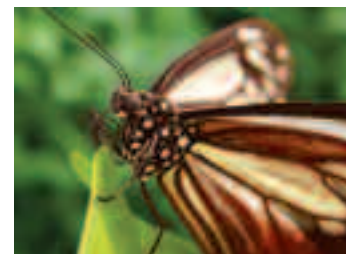
1/125 sec. f11



**ZUIKO DIGITAL™ ED 12-60mm f2.8-4.0 SWD (24-120mm\*)**

Closest focusing distance: 9.84" | Dimensions: 3.13" x 3.88"  
Weight: 20.28 oz. | Filter size: 72mm

Standard zoom lens incorporating a Supersonic Wave Drive (SWD) for high-speed AF covering a wide angle equivalent to 24mm on 35mm camera lenses. Features high imaging performance with excellent contrast to the image peripheries, as well as close-focusing capability of 9.84" throughout the zoom range.



1/250 sec. f5.6



**ZUIKO DIGITAL™ ED 70-300mm f4.0-5.6 (140-600mm\*)**

Closest focusing distance: 37.80" (MF)/47.24" (AF) | Dimensions: 3.15" x 5.02"  
Weight: 21.69 oz. | Filter size: 58mm

Super-telephoto zoom lens with range equivalent to 600mm on a 35mm camera lens. Super-light weight of just 21.7 ounces expands the potential of handheld super-telephoto shooting. The macro capability of 1x equivalent to 35mm camera lenses allows users to enjoy both super-telephoto and macro shooting with a single lens.



1/15 sec. f3.5



**ZUIKO DIGITAL™ ED 35-100mm f2.0 (70-200mm\*)**

Closest focusing distance: 55.12" | Dimensions: 3.80" x 8.41"  
Weight: 58.2 oz. (without tripod adapter) | Filter size: 77mm

A large f2.0 constant aperture gives you unmatched brightness and creative opportunities. An open aperture with exceptional defocus quality makes this lens ideal for portrait, fashion and nature photography. Indoor sports photographers and photojournalists will appreciate the fast shooting speeds courtesy of the large aperture. Axial chromatic aberrations common with this type of telephoto lens is minimized by using one Super ED (Extra-low Dispersion) lens and four ED lens elements. You'll have superior imaging performance at all zoom focal lengths.



1/15 sec. f3.5



**ZUIKO DIGITAL™ ED 50-200mm f2.8-3.5 SWD (100-400mm)**

Closest focusing distance: 47.24" | Dimensions: 3.41" x 6.18"  
Weight: 35.09 oz. (without tripod adapter) | Filter size: 67mm

Super-telephoto zoom lens features an SWD mechanism for high-speed AF with a zooming range equivalent to 100 to 400mm on 35mm camera lenses. It incorporates three ED (Extra-low Dispersion) lenses to provide both the brightness of the large f2.8-3.5 aperture and high picture quality. The circular aperture diaphragm offers an enhanced defocusing.



1/8 sec. f2.0



**ZUIKO DIGITAL™ ED 50mm f2.0 Macro (100mm)**

Closest focusing distance: 9.45" | Dimensions: 2.80" x 2.42"  
Weight: 10.58 oz. | Filter size: 52mm

Medium-telephoto macro lens with a large f2.0 aperture for excellent resolution, contrast and brightness. A floating mechanism ensures stable high picture quality from macro to distant view and makes this lens suitable for a wide range of uses from macro to portrait shooting.

\* 35mm camera equivalent

# ACCESSORIES

Complete the picture with a full range of accessories.



## Electronic Flash FL-50R

A high-intensity electronic flash with remote flash compatibility. It features a guide number of 28\* at a focal length of 12mm (equivalent to 24mm on a 35mm camera) and 50\* at a focal length of 42mm (equivalent to 85mm on a 35mm camera). Accurate flash control ensures the precise photo metering that digital cameras require. A super FP flash function is provided for use with a high shutter speed of 1/8000 sec. The FLBA-1 Bounce Adapter, FLRA-1 Reflector Adapter and FLST-1 Flash Stand are included.



## Electronic Flash FL-36R

A compact, high-intensity electronic flash with remote flash compatibility. It features a guide number of 20\* at a focal length of 12mm (equivalent to 24mm on a 35mm camera) and 36\* at a focal length of 42mm (equivalent to 85mm on a 35mm camera). Accurate flash control ensures the precise photo metering that digital cameras require. A super FP flash function is provided for use with a high shutter speed of 1/8000 sec. The FLST-1 Flash Stand is included.



\* Guide number: at ISO 100 equivalent. At ISO 200, guide numbers 20, 26, 36 and 50 are equivalent to 28, 40, 50 and 70, respectively.

## Power Battery Holder HLD-4

Equipped with a shutter release button and other essential buttons and dials for smooth operation during vertical-format shooting. The power supply accommodates up to two BLM-1 Li-ion batteries — the same type used by the E-30 camera — enabling extended shooting sessions. The AABH-1\* AA-size Battery Holder\* is also included.

\* The number of recordable pictures can vary significantly depending on the operating environment. AA-size alkaline batteries or AA-size lithium-ion batteries can be used.



## Li-ion Battery Charger BCM-1

Quickly recharges the BLM-1 Li-ion battery in approximately two hours (under normal temperature). The rated input voltage extends from 100 to 240 V AC, so that the charger can be used worldwide\*.

\* Power plug configuration varies in different countries and regions. When traveling, be sure to obtain a plug adapter suitable for the country or region you will be visiting.



## Grip Strap GS-3

The GS-3 provides increased stability when using the E-30 with the HLD-4 Power Battery Holder.



## Image Management/Editing Software OLYMPUS Master 2 (included)

Olympus Master 2 software arranges the saved images automatically according to the dates of shooting and allows you to manage them in any way you want. The image editing and printing functions make editing and processing easy. Development of RAW images is possible in high picture quality with easy-to-use multiple functions. The camera (firmware) and software can be updated easily.

\* Requires internet connection.



## Digital Workflow Software OLYMPUS Studio 2 (trial edition included)

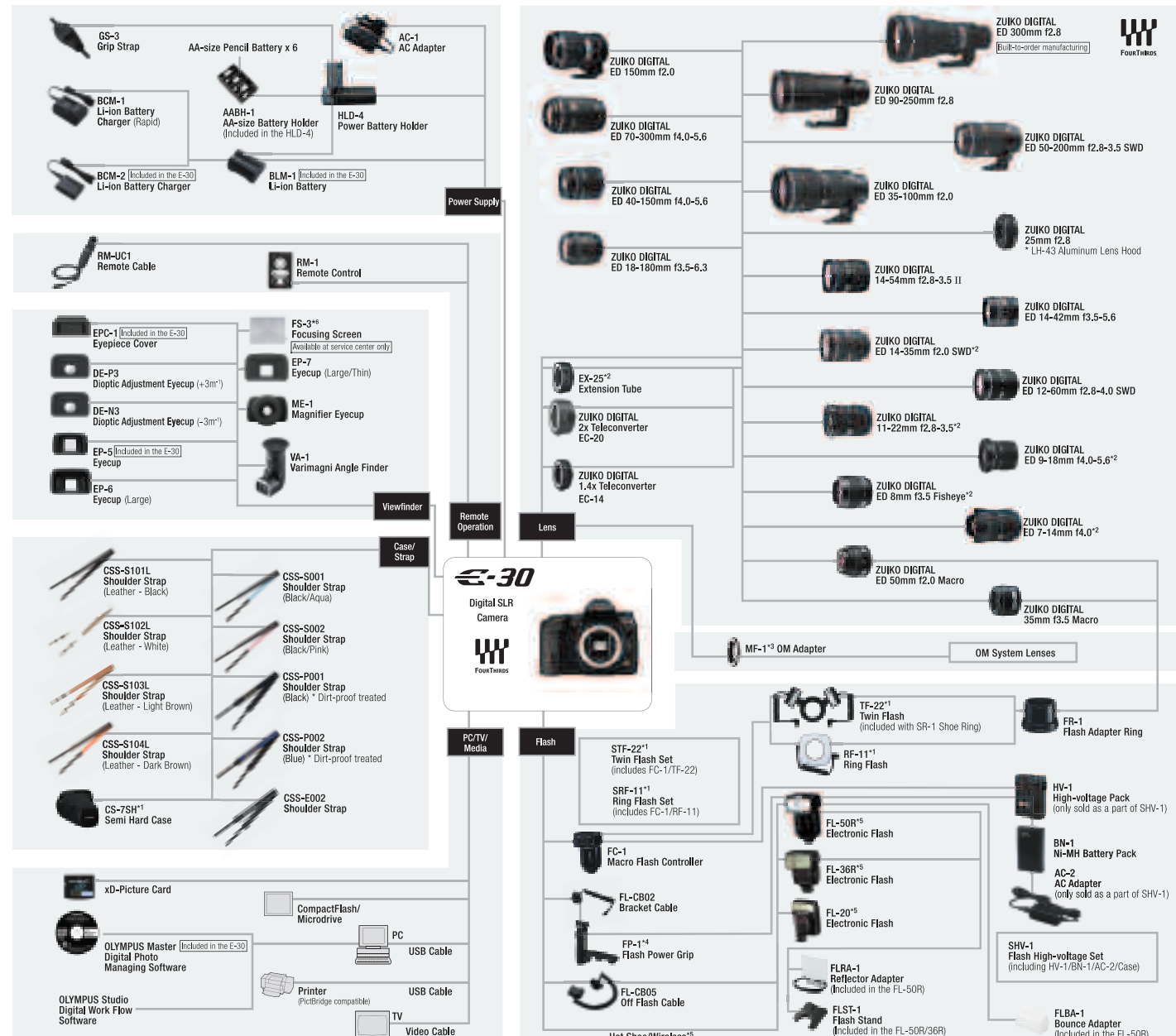
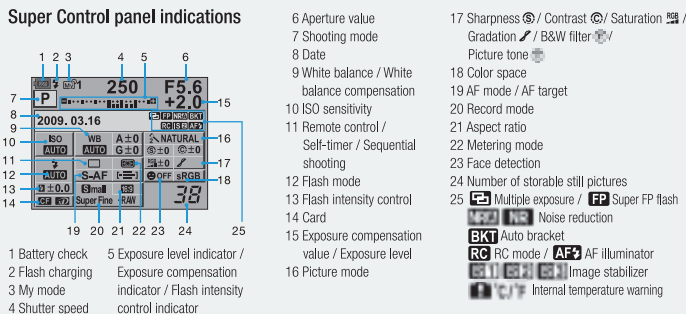
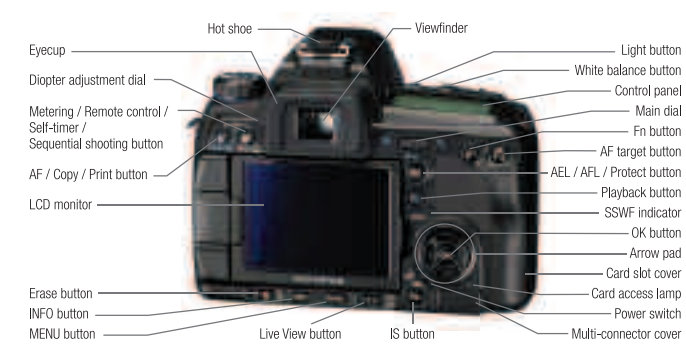
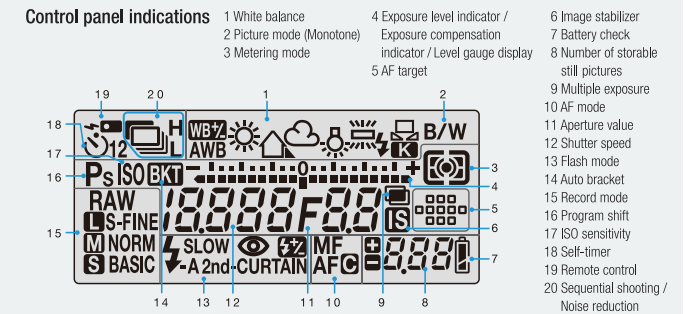
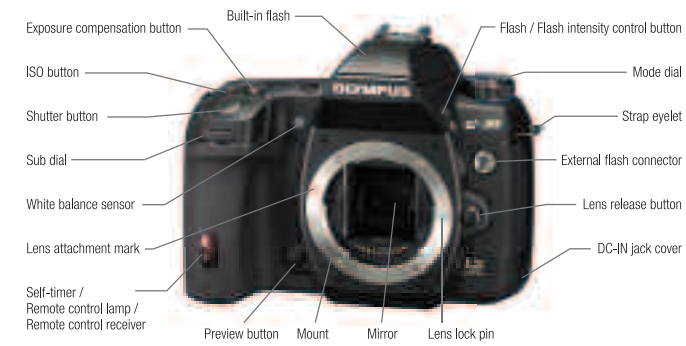
In addition to the basic functions of Olympus Master 2, this software includes the image select function that selects the best shots from multiple picture data, the RAW development and processing function with high quality and various image editing functions. This software also allows the PC to connect to the camera and control it directly.

\* The trial edition can only be used for 30 days after installation. After the trial period has expired, online purchase of a license key is required for further use. (Requires internet connection.)



### OLYMPUS Master 2 / OLYMPUS Studio 2 System Requirements

• Compatible OS: Windows 2000/XP/Vista, Mac OS X (v.10.3 or later) • CPU: [Windows] Pentium III 500 MHz or higher [Macintosh] Power PC G3 500 MHz or higher, Intel Core Solo/Duo 1.5 GHz or more • RAM: OLYMPUS Master 2 - 256 MB or more [512 MB or more recommended], OLYMPUS Studio 2 - 512 MB or more recommended • HDD: 500 MB or more • Monitor: 1024 x 768 pixels or higher [Windows: 65,536 colors or more [16.77 million colors or more recommended]], [Macintosh: 32,000 colors or more [16.77 million colors or more recommended]] • Other: CD-ROM drive [required for installation]



\* Available items may vary depending on the sales area. \*1 For available lenses, consult the official Olympus website. \*2 Extension Tube EX-25 cannot be attached to ZUIKO DIGITAL ED 14-35mm, 11-22mm, ED 9-18mm, ED 7-14mm or ED 8mm Fisheye. \*3 Some restrictions apply to the use of OM System Lenses attached with the OM Adapter MF-1. Please note that manufacture of OM System Lenses has been discontinued. \*4 The shutter button on the Flash Power Grip does not function when attached to the E-30. Use the camera's shutter button instead. \*5 Wireless connection is only available with FL-50R and FL-36R. FL-20 is not compatible with wireless connection. \*6 Installation of FS-3 Focusing Screen is available at an Olympus authorized service center.



## E-30 Specifications

<b>Product Type</b>	<b>Product type</b>	Single-lens reflex Live View digital camera with interchangeable lens system
	<b>Memory</b>	CompactFlash Type I/II (UDMA), Microdrive, xD-Picture Card (Dual-Slot)
	<b>Screen size</b>	17.3mm (H) x 13mm (V)
	<b>Lens mount</b>	Four Thirds mount
<b>No. of Effective Pixels</b>	<b>No. of effective pixels</b>	12.3 megapixels
<b>Image Pickup Element</b>	<b>Product type</b>	4/3" High-speed Live MOS Sensor
	<b>Total no. of pixels</b>	Approx. 13,100,000 pixels
	<b>Aspect ratio</b>	1.33 (4:3)
<b>Recording</b>	<b>Dust Reduction System</b>	Supersonic Wave Filter (dust-reduction system for image sensor)
	<b>Recording format</b>	DCF, DPOF compatible / Exif, PRINT Image Matching III
	<b>File format</b>	RAW (12-bit lossless compression), JPEG, JPEG+RAW
<b>Viewfinder</b>	<b>Recording image size</b>	[RAW] 4032 x 3024 pixels, [JPEG] 4032 x 3024 pixels - 640 x 480 pixels
	<b>Product type</b>	Eye-level single-lens reflex viewfinder
	<b>Field of view</b>	Approx. 98%
	<b>Viewfinder magnification</b>	Approx. 1.02x (-1m <sup>3</sup> , 50mm lens, infinity)
	<b>Eye point</b>	Approx. 24.2mm (-1m <sup>3</sup> ) from eyepiece lens
	<b>Diopter adjustment range</b>	-3.0 + 1.0m <sup>-1</sup>
	<b>Focusing screen</b>	Fixed, Neo Lumi-Micro Mat screen (interchangeable; FS-3 Focusing Screen is available at an Olympus authorized service center.)
<b>Live View</b>	<b>Live View</b>	Live MOS Sensor, 100% field of view, Exposure compensation pre-view, White balance adjustment preview, Gradation auto preview, Face detection preview, Perfect shot preview, MF/S-AF possible, 5x/7x/10x magnification possible
	<b>Display</b>	Grid line, AF frame, AF point, Shooting information, Histogram, Level gauge, IS mode
<b>Preview</b>	<b>Optical preview</b>	Available with preview button
	<b>Live preview</b>	Can be set to Fn button (Live View automatically activated with stopped down aperture)
<b>Image Stabilization</b>	<b>System</b>	Built-in (Imager sensor shift type image stabilization)
	<b>Mode</b>	3 modes (I.S.1, I.S.2, I.S.3)
<b>Monitor</b>	<b>Focal length setting</b>	Available
	<b>Effective compensation range</b>	Max. approx. 5 EV steps (depends on the lens type and shooting conditions)
	<b>Product type</b>	Variable dual-axis HyperCrystal II LCD (semi-transmissive TFT color LCD)
	<b>Size</b>	2.7 inches
<b>Focusing</b>	<b>Total no. of dots</b>	Approx. 230,000 dots
	<b>Playback field of view</b>	100%
	<b>Brightness control</b>	15 levels
	<b>Color temperature control</b>	15 levels
	<b>AF system</b>	TTL phase-difference detection AF, High-speed imager AF*1
	<b>Focus mode</b>	Single AF (S-AF) / Continuous AF (C-AF) / Manual Focus (MF) / S-AF + MF / C-AF + MF / C-AF/C-AF+MF not available with Live View shooting mode
<b>AF lock</b>	<b>Focusing point</b>	11-point full twin cross sensor (TTL phase-difference detection), 11 areas*2 (High-Speed Imager AF*1)
	<b>Focusing point selection</b>	All target, Dynamic-single target, Single target (TTL phase-difference AF) / Single, All, Face Detection (High-Speed Imager AF*1)
	<b>AF luminance range</b> (TTL phase-difference AF)	EV -2 - 19 (at 20°C, ISO 100)
	<b>AF illuminator</b> (TTL phase-difference AF)	Built-in flash (flash-off mode and external flash available)
<b>AF tracking</b> (TTL phase-difference AF)	<b>AF lock</b>	Locked at first position of Shutter button in Single AF mode / AFL button (customizable)
	<b>Focus tracking</b>	Interlocked with Continuous AF mode
	<b>Focus aid</b>	Available
	<b>AF fine adjust</b>	±20 steps (settings for up to 20 lenses can be registered)
<b>Exposure Control</b>	<b>Metering system</b> (TTL open-aperture metering system)	(1) Digital ESP metering (49-point multi-pattern metering) (2) Center-weighted average metering (3) Spot metering (4) Spot with Highlight control (5) Spot with Shadow control
	<b>Metering range</b>	EV 1 - 20 (at normal temperature, 50mm f2, ISO 100)
	<b>Exposure mode</b>	(1) AUTO (2) P: Program AE (Program shift can be performed) (3) A: Aperture priority AE (4) S: Shutter priority AE (5) M: Manual (6) Scene program AE (7) Scene select AE
	<b>Scene program AE</b>	Portrait, Landscape, Macro, Sport, Night+Portrait
	<b>Scene select AE</b>	Children, High Key, Low Key, Digital Image Stabilization, Nature Macro, Candle, Sunset, Documents, Panorama (available with the Olympus xD-Picture Card), Fireworks, Beach & Snow
	<b>ISO sensitivity</b>	Auto: ISO 200 - 3200 (customizable, default: ISO 200 - 800) / Manual: ISO 100 - 3200, in 1/3 or 1 EV steps
	<b>Exposure compensation</b>	±5 EV (selectable in 1/3, 1/2 or 1 EV steps)
	<b>AE lock</b>	Locked at first position of Shutter button / AEL button (customizable)
	<b>Exposure bracketing</b>	3 or 5 frames in 0.3, 0.5, 0.7 or 1 EV steps selectable
	<b>ISO bracketing</b>	3 frames in 0.3, 0.7, 1 EV steps selectable
<b>Exposure reference adjust</b>	±1 EV range selectable in 1/6 EV steps	

<b>White Balance</b>	<b>Auto white balance</b>	Hybrid detection system with High-speed Live MOS Sensor and dedicated external sensor
	<b>Preset white balance</b>	8 settings (3000K - 7500K)
	<b>One-touch white balance</b>	1 setting can be registered
	<b>Custom white balance</b>	1 setting can be registered at Kelvin temperature (2000K - 14000K)
<b>White balance compensation</b>	<b>White balance compensation</b>	±7 steps in each A-B / G-M axis (in Auto/Preset/One-Touch WB mode)
	<b>White balance bracketing</b>	3 frames in 2/4/6 steps selectable in each A-B / G-M axis
	<b>Color Mode</b>	<b>Color matrix</b>
<b>Picture Mode</b>	<b>Mode</b>	Vivid, Natural, Muted, Portrait, Monotone, Custom
	<b>Adjustment parameter</b>	Contrast and Sharpness level available in 5 steps for each mode / Saturation level available in 5 steps for Vivid, Natural, Muted or Portrait / Gradation level available in 4 steps for Custom
	<b>Filter effect</b>	Yellow, Orange, Red or Green filter available for Monotone
	<b>Picture tone</b>	Sepia, Blue, Purple or Green tone available for Monotone
<b>Shutter</b>	<b>Gradation</b>	4 settings (Auto, High Key, Normal, Low Key) available
	<b>Product type</b>	Computerized focal-plane shutter
<b>Shutter speed</b>	<b>Shutter speed</b>	AUTO mode: 2 - 1/8000 sec., P(Ps)/A(S/M) mode: 60 - 1/8000 sec. (Bulb: available), (selectable in 1/3, 1/2 or 1 EV steps)
	<b>Self-timer</b>	Operation time: 12 sec., 2 sec. (cancel available)
	<b>Remote cable release</b>	Available with optional RM-UC1 Remote Cable (bulb control also available)
	<b>Remote control</b>	Available with optional RM-1 Remote Control (bulb control also available)
<b>Drive</b>	<b>Anti shock mode</b>	Available (selectable from 1 to 30 sec.)
	<b>Drive mode</b>	Single-frame shooting, Sequential shooting, Self-timer, Remote control
<b>Sequential shooting speed</b>	<b>Sequential shooting speed</b>	H mode: Approx. 5 frames/sec., L mode: 1 to 4 frames/sec. selectable
<b>Shooting</b>	<b>Max. recordable pictures on sequential shooting</b>	RAW mode: max. 14 frames, JPEG mode: depends on compression ratio and no. of pixels (LN mode: up to approx. 280 frames with SanDisk Extreme IV 4 GB, under Olympus's standard testing conditions)
	<b>Integrated Flash</b>	<b>Flash control mode</b>
<b>Wireless Flash</b>	<b>Built-in flash</b>	Retractable flash (auto pop-up type), GN=18 (ISO200), GN=13 (ISO100)
	<b>Flash mode</b>	Auto, Red-eye reduction, Red-eye reduction slow sync, (1st curtain), Fill-in, Slow sync, (1st curtain), Slow sync, (2nd curtain), Manual (Full, 1/4, 1/16, 1/64), Off
	<b>Synchronization speed</b>	1/250 sec. or less (Super FP: 1/125 - 1/8000 sec.)
	<b>Flash intensity control</b>	Up to ±3 EV in 0.3, 0.5 or 1 EV steps selectable
<b>Control</b>	<b>Flash bracketing</b>	3 frames in 0.3, 0.5, 0.7, 1 EV steps selectable
	<b>Compatible external flash</b>	FL-50R, FL-36R
	<b>Control method</b>	Triggered and controlled by built-in flash light (Olympus Wireless RC Flash system compatible)
	<b>Flash control mode</b>	TTL Auto, Auto, Manual, FP TTL Auto, FP Manual
<b>Art Filter</b>	<b>Number of channels</b>	4 channels
	<b>Number of groups</b>	3 groups
<b>Multi-Exposure</b>	<b>Mode</b>	Pop Art, Soft Focus, Pale & Light Color, Light Tone, Grainy Film, Pin Hole
	<b>Number of frames</b>	Up to 4 frames
<b>Multi-Aspect</b>	<b>Multi-exposure function</b>	Auto gain control, Live View or Playback (RAW) + Multi-exposure
	<b>Aspect ratio</b>	4:3, 3:2, 16:9, 6:6, 5:4, 7:6, 6:5, 7:5, 3:4
<b>Level Gauge</b>	<b>Detection</b>	2-axis
	<b>Display</b>	Rear LCD monitor, Viewfinder, Control panel
<b>Playback</b>	<b>Playback modes</b>	Single-frame, Index (4/9/16/25/49/100 frames), Calendar, Close-up (2 - 14x), Slideshow, Picture rotation (auto mode available), Light box
	<b>Information display</b>	Histogram (independent Luminance/RGB available), Highlight/Shadow point warning, AF frame, Photographic information, Off
	<b>Menu</b>	<b>Languages</b>
<b>Custom Setting</b>	<b>My mode</b>	2 settings can be registered
	<b>Reset</b>	2 settings can be registered
<b>Erasing</b>	<b>Erasing function</b>	Single frame, all frames, selected frames (with protect function)
	<b>Copy between media</b>	Single frame, all frames, selected frames
<b>Editing</b>	<b>RAW picture editing</b>	RAW development
	<b>JPEG editing</b>	Gradation auto, Monotone, Sepia, Red-eye fix, Saturation, Resize, Trimming, Aspect
<b>Print</b>	<b>Picture composition</b>	Up to 4 frames, Gain compensation available (0.1 - 2.0)
	<b>Print function</b>	Print reservation (DPOF), Direct print (PictBridge compatible)
<b>Input/Output</b>	<b>PC interface</b>	USB 2.0 Hi-speed for storage and camera control
	<b>USB/Video connector</b>	Dedicated multi-connector (Video: NTSC/PAL selectable, optional RM-UC1 Remote Cable available)
	<b>Flash attachment</b>	Hot shoe, External flash connector (x attachment)
<b>Power</b>	<b>Power</b>	DC-input (optional AC-1)
	<b>Battery</b>	BLM-1 Li-ion Battery (included)
<b>Requirements</b>	<b>Sleep mode</b>	Available (Setting time: 1, 3, 5, 10 min. selectable)
	<b>No. of recordable pictures</b> (with 50% flash light)	Approx. 750 shots (optical viewfinder) with BLM-1 under CIPA testing standard
	<b>Power Battery Holder</b>	Optional HLD-4 available
<b>Dimensions/Weight</b>	<b>Dimensions</b>	5.57" (W) x 4.23" (H) x 2.95" (D) (excluding protrusions)
	<b>Weight</b>	Approx. 23.10 oz. (body only)
<b>Operating Environment</b>	<b>Temperature</b>	32 - 104°F (operation) / -4 - 140°F (storage)
	<b>Humidity</b>	30 - 90% (operation) / 10 - 90% (storage)

\*1 When a lens other than the ZUIKO DIGITAL ED 9-18mm f4.0-5.6, ED 14-42mm f3.5-5.6, 14-54mm f2.8-3.5 II, ED 40-150mm f4.0-5.6 or 25mm f2.8 is used, AF is executed again when the shutter button is pressed all the way (except for magnification display mode). With the ED14-42mm f3.5-5.6 or ED 40-150mm f4.0-5.6 lens, the firmware needs to be updated to Ver.1.1 or later. \*2 Except for face detection AF or magnification display AF.

### E-30 (body) includes:

- BLM-1 Li-ion Battery
- BCM-2 Li-ion Battery Charger
- OLYMPUS Master 2 CD-ROM
- USB Cable
- Video Cable
- EPC-1 Eyepiece Cover
- Shoulder Strap

\* Camera package may differ depending on the sales area.



\* Specifications and appearances are subject to change without any notice or obligation on the part of the manufacturer. \* Windows is a registered trademark of Microsoft Corporation in the United States and/or other countries. \* Macintosh and Mac OS are trademarks of Apple Inc. \* All other company and product names are registered trademarks and/or trademarks of their respective owners. \* "Shadow Adjustment Technology" function contains patented technologies from Apical Limited. \* The pictures in this catalog of the LCD monitors are simulated.



**OLYMPUS** Olympus Imaging America Inc.  
www.olympus.com

### Number of Recordable Pictures (in main record modes)

Record mode	Compression type	Image size (pixels)	Compression rate	File format	File size (MB)	Recordable images (with 1 GB card)
Large	Super Fine	4032 x 3024	(Lossless)	ORF	Approx. 13.9	Approx. 719
	Fine		1/2.7		Approx. 8.2	Approx. 111
	Normal		1/4		Approx. 5.7	Approx. 172
	Basic		1/8		Approx. 2.7	Approx. 370
Middle	Super Fine	2560 x 1920	1/1.2	JPEG	Approx. 1.8	Approx. 552
	Fine		1/2.7		Approx. 3.2	Approx. 311
	Normal		1/4		Approx. 2.2	Approx. 459
	Basic		1/8		Approx. 1.1	Approx. 899
Small	Super Fine	640 x 480	1/1.2	JPEG	Approx. 0.8	Approx. 1339
	Fine		1/2.7		Approx. 0.3	Approx. 4196
	Normal		1/4		Approx. 0.2	Approx. 5722
	Basic		1/8		Approx. 0.1	Approx. 8992
			1/12		Approx. 0.1	Approx. 12589

\* Middle selectable from 3200 x 2400, 2560 x 1920 or 1600 x 1200. \* Small selectable from 1280 x 960, 1024 x 768 or 640 x 480. \* The figures in the table are typical values with an aspect ratio of 4:3. File sizes and the number of recordable pictures vary depending on the settings and subjects. \* The number of recordable pictures displayed on the camera shows the value assuming the lowest compression rate. \* Default setting is LN mode.